



**Tournament  
Series** PRESENTED BY



KENNY CURNOW

704-770-8600



# WELCOME TO NEELY HENRY!

- BOAT CHECK WILL BEGIN AT 3:00 AM!
- BOATS CHECKING IN BY WATER WILL COME TO THE DOCK IN FRONT OF STORE WITH FLASHING RED LIGHTS.
- SAFETY FIRST! ANYTIME THE BIG MOTOR IS RUNNING, YOU MUST BE WEARING A COAST GUARD RATED PFD (EVEN IN PRACTICE). PFD REQUIRED BELOW DAM.
- PLEASE FOLLOW ALL POSTED WATER CONTROL SIGNS AND BOUYS. TICKET DURING TOURNAMENT = DQ.
- BLAST OFF AROUND 6:00AM/FIRST FLIGHT DUE IN AT 2:30PM. THIS IS **NOT** A TRAILERED WEIGH-IN.

# NEELY HENRY

- WHEN YOU ARRIVE AT BOAT CHECK ON SATURDAY MORNING, THE TEAM MEMBER IN THE VEHICLE'S DRIVER SEAT NEEDS TO HAVE THE TEXT MESSAGE WITH THEIR TEAM'S BOAT NUMBER OPEN ON THEIR PHONE.
- THE VEHICLE'S DRIVER WILL BE GIVEN A KEY FOB AT BOAT CHECK. THE KEY FOB HAS THE TEAM'S BOAT NUMBER.
- DO NOT LOSE YOUR KEY FOB!!! YOU MUST RETURN THE KEY FOB AT WEIGH-IN IN ORDER TO WEIGH YOUR TEAM'S FISH.
- DO NOT PARK IN DOLLAR GENERAL PARKING LOT. OVERFLOW PARKING WILL BE AT THE VENUE.

# **NO WAKE ZONES**

- **OBSERVE ALL NO WAKE ZONES ON THE LAKE!**
- **BETWEEN THE BRIDGES IN GADSDEN IS A NO WAKE ZONE.**
- **THERE IS ALSO A NO WAKE ZONE UNDER GREEN BRIDGE AT RAINBOW CITY.**

# FISH SIZE LIMITS

•LARGEMOUTH 12 INCHES

•SPOTTED BASS 12 INCHES

Leave this side of the river open!

411

OFF LIMITS

Water Check

Boat Check

Blastoff Boat

Broad St

Broad St

Elmwood Ave

N Hood Ave

Jeff Dr

George Wallace Dr

**This WILL NOT BE a TRAILERED weigh in!!!  
12 inch MINIMUM length on Largemouth and Spotted Bass**



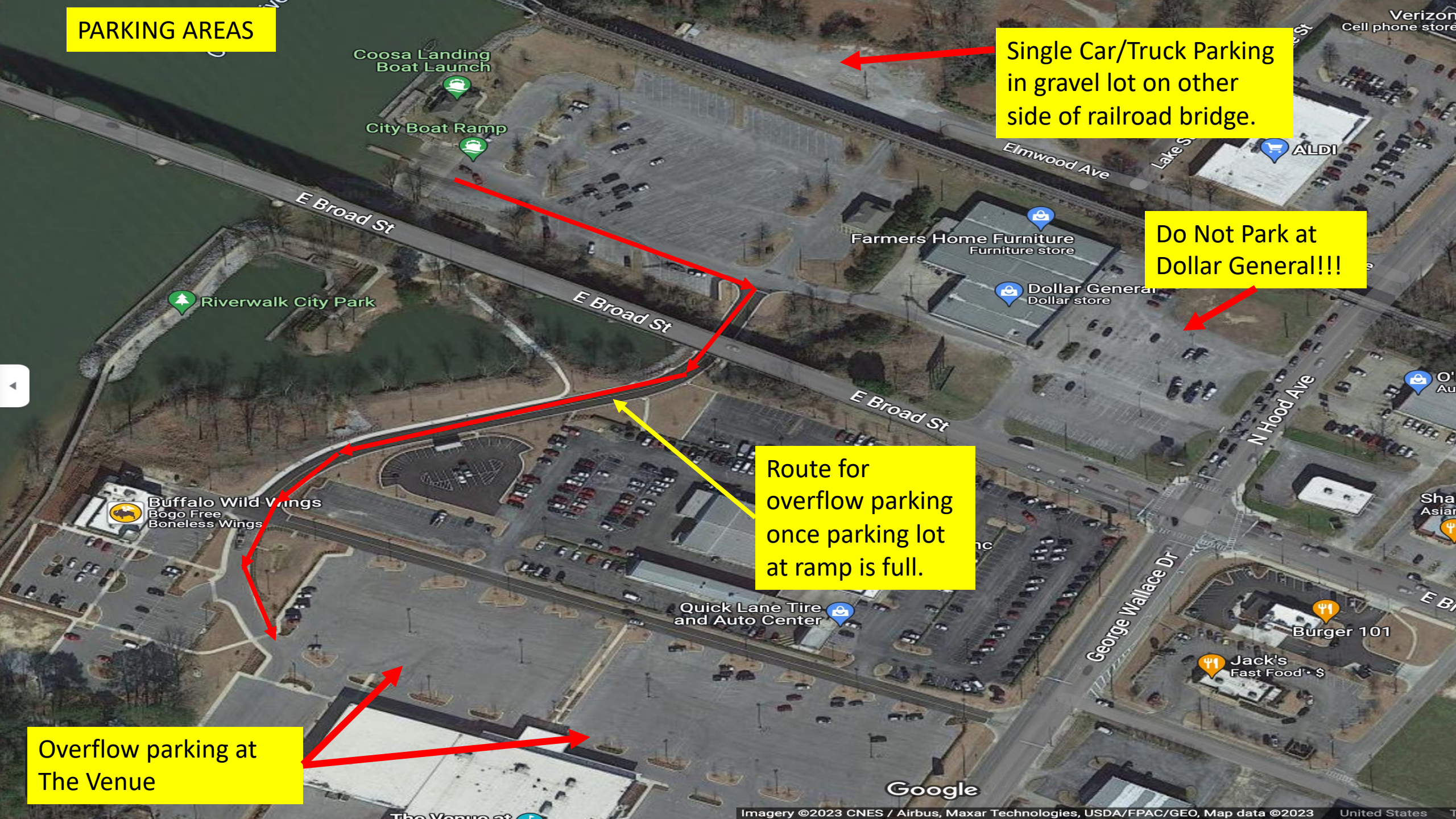
**PARKING AREAS**

Single Car/Truck Parking in gravel lot on other side of railroad bridge.

Do Not Park at Dollar General!!!

Route for overflow parking once parking lot at ramp is full.

Overflow parking at The Venue





**TOURNAMENT DIRECTOR  
JON SIMPSON  
256-309-9852**

- IN AN EMERGENCY SITUATION CALL 911. THEN, ONLY WHEN SAFE TO DO SO, CALL EITHER MYSELF OR DANIEL MONTGOMERY AT 256-284-9889.
- AFTER WEIGH-IN STARTS, YOU WILL HAVE TO CALL KAY @ 256-303-7905.

**IF YOU ARE COMING BY WATER  
OR USING AN ALTERNATE**

CONTACT JON VIA TEXT MESSAGE OR EMAIL BY  
FRIDAY (DAY BEFORE TOURNAMENT) AT 5 PM.

**EXAMPLE: BOAT#1 COMING BY WATER OR  
BOAT#1 JOHN DOE FISHING FOR JOHN  
SMITH.**

256-309-9852 OR [Jon@alabamabasstrail.org](mailto:Jon@alabamabasstrail.org)

# QUESTIONS?

