

Tournament Series



Academy
SPORTS+OUTDOORS



**BIG
BITE
BAITS**



ALL about THE SOUTH



GARMIN

**Sweet Home
Alabama**

YETI
COOLERS



**Tournament
Series** PRESENTED BY



BAJIO



PHOENIX
BOATS

ADVANTAGE
TRAILER RENTALS



**Alabama Power
Foundation**

Alabama Bass Trail.org

KENNY CURNOW

704-770-8600



WELCOME TO WHEELER LAKE!

- BOAT CHECK WILL BEGIN AT 3:00 AM!
- BOATS CHECKING IN BY WATER WILL COME TO THE DOCK WITH FLASHING RED LIGHTS.
- SAFETY FIRST! ANYTIME THE BIG MOTOR IS RUNNING, YOU MUST BE WEARING A COAST GUARD RATED PFD (EVEN IN PRACTICE). PFD REQUIRED BELOW GUNTERSVILLE DAM.
- PLEASE FOLLOW ALL POSTED WATER CONTROL SIGNS AND BOUYS. TICKET DURING TOURNAMENT = DQ.
- BLAST OFF AROUND 5:30AM/FIRST FLIGHT DUE IN AT 2:30PM. THIS IS **NOT** A TRAILERED WEIGH-IN.

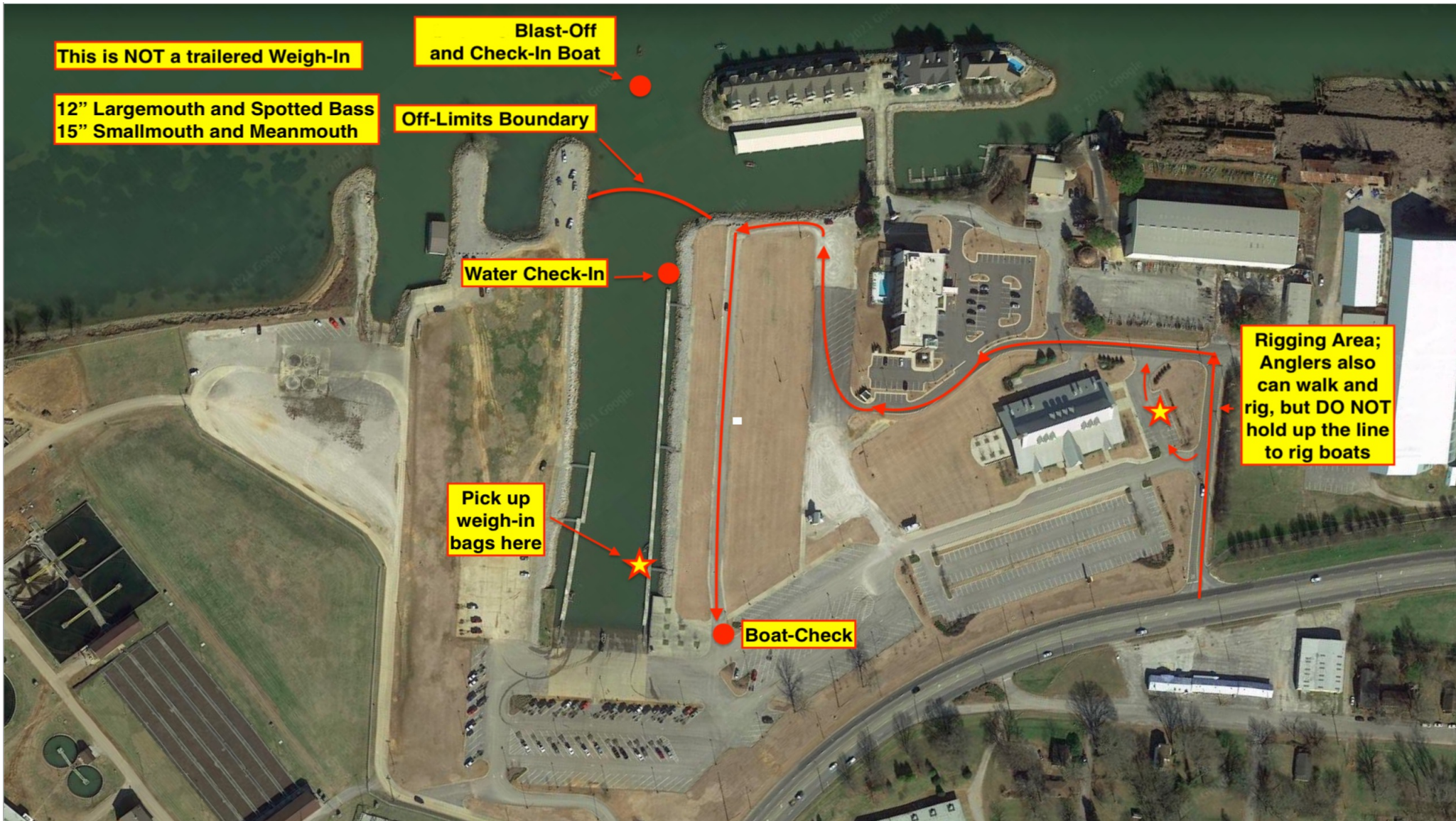
WHEELER LAKE

- WHEN YOU ARRIVE AT BOAT CHECK ON SATURDAY MORNING, THE TEAM MEMBER IN THE VEHICLE'S DRIVER SEAT NEEDS TO HAVE THE TEXT MESSAGE WITH THEIR TEAM'S BOAT NUMBER OPEN ON THEIR PHONE.
- THE VEHICLE'S DRIVER WILL BE GIVEN A KEY FOB AT BOAT CHECK. THE KEY FOB HAS THE TEAM'S BOAT NUMBER.
- DO NOT LOSE YOUR KEY FOB!!! YOU MUST RETURN THE KEY FOB AT WEIGH-IN IN ORDER TO WEIGH YOUR TEAM'S FISH.

FISH SIZE LIMITS

- | | |
|---------------|-----------|
| •LARGEMOUTH | 12 INCHES |
| •SMALLMOUTH | 15 INCHES |
| •SPOTTED BASS | 12 INCHES |

****MEANMOUTH WILL BE MEASURED AS
SMALLMOUTH @ 15 INCHES****



This is NOT a trailered Weigh-In

**12" Largemouth and Spotted Bass
15" Smallmouth and Meanmouth**

**Blast-Off
and Check-In Boat**

Off-Limits Boundary

Water Check-In

**Pick up
weigh-in
bags here**

Boat-Check

**Rigging Area;
Anglers also
can walk and
rig, but DO NOT
hold up the line
to rig boats**

TOURNAMENT DIRECTOR
JON SIMPSON
256-309-9852

- IN AN EMERGENCY SITUATION CALL 911. THEN, ONLY WHEN SAFE TO DO SO, CALL EITHER MYSELF OR DANIEL MONTGOMERY AT 256-284-9889.
- AFTER WEIGH-IN STARTS, YOU WILL HAVE TO CALL KAY.

IF YOU ARE COMING BY WATER OR USING AN ALTERNATE

**CONTACT JON VIA TEXT MESSAGE OR EMAIL BY
FRIDAY (DAY BEFORE TOURNAMENT) AT 5 PM.
TEXT OR EMAIL SHOULD INCLUDE BOAT# AND
STATE "COMING BY WATER" OR "USING
ALTERNATE".**

**EXAMPLE: BOAT#1 COMING BY WATER OR
BOAT#1 USING ALTERNATE**

256-309-9852 OR Jon@alabamabasstrail.org

QUESTIONS?

