

# Tournament Series



**Academy**  
SPORTS+OUTDOORS



ALL about THE SOUTH

**Sweet Home  
Alabama**



**GARMIN**

**YETI**  
COOLERS



**Tournament  
Series** PRESENTED BY



**BAJIO**



**PHOENIX**  
BOATS

**ADVANTAGE**  
TRAILER RENTALS



**Alabama Power  
Foundation**

**Alabama Bass Trail.org**

Kenny Curnow  
704-770-8600



# RULES OVERVIEW

**RULES**

# WELCOME TO LAY LAKE

- Boat Check begins at 3am!
- Check-in by water at flashing lights at the dock.
- Safety First! Anytime your big motor is running, you must be wearing a CG rated PFD! Please use your kill-switches, as well!
- Please follow all posted water control signs and buoys! (If you're ticketed, you are DQ)
- Blast-off at Safe Light - Approximately 6:00am
- First Flight due in at 2:30 pm. This is a trailered weigh-in.

# LAY LAKE

- When you arrive at Boat Check Saturday morning, the team member in the vehicle's driver seat needs to have the text message with their team's boat number open on their phone.
- The vehicle's driver will be given a key fob at Boat Check. The key fob has the team's boat number.
- DO NOT LOSE YOUR KEY FOB!!! You must return the key fob at weigh-in in order to weigh your team's fish.

# Fish Size Limit

Largemouth 12-inches

Spotted Bass 12-inches

Fish size limit: 12" Spotted and Largemouth Bass. This will be a trailered weigh-in.

If there is fog, blast-off boat will be at mouth of Beeswax Creek.

Blast-off Boat

Off limits is from the ramp to the edge of the waterfront park and 10 yards out.

Water Check Red Flashing Lights

Stage and weigh-in area

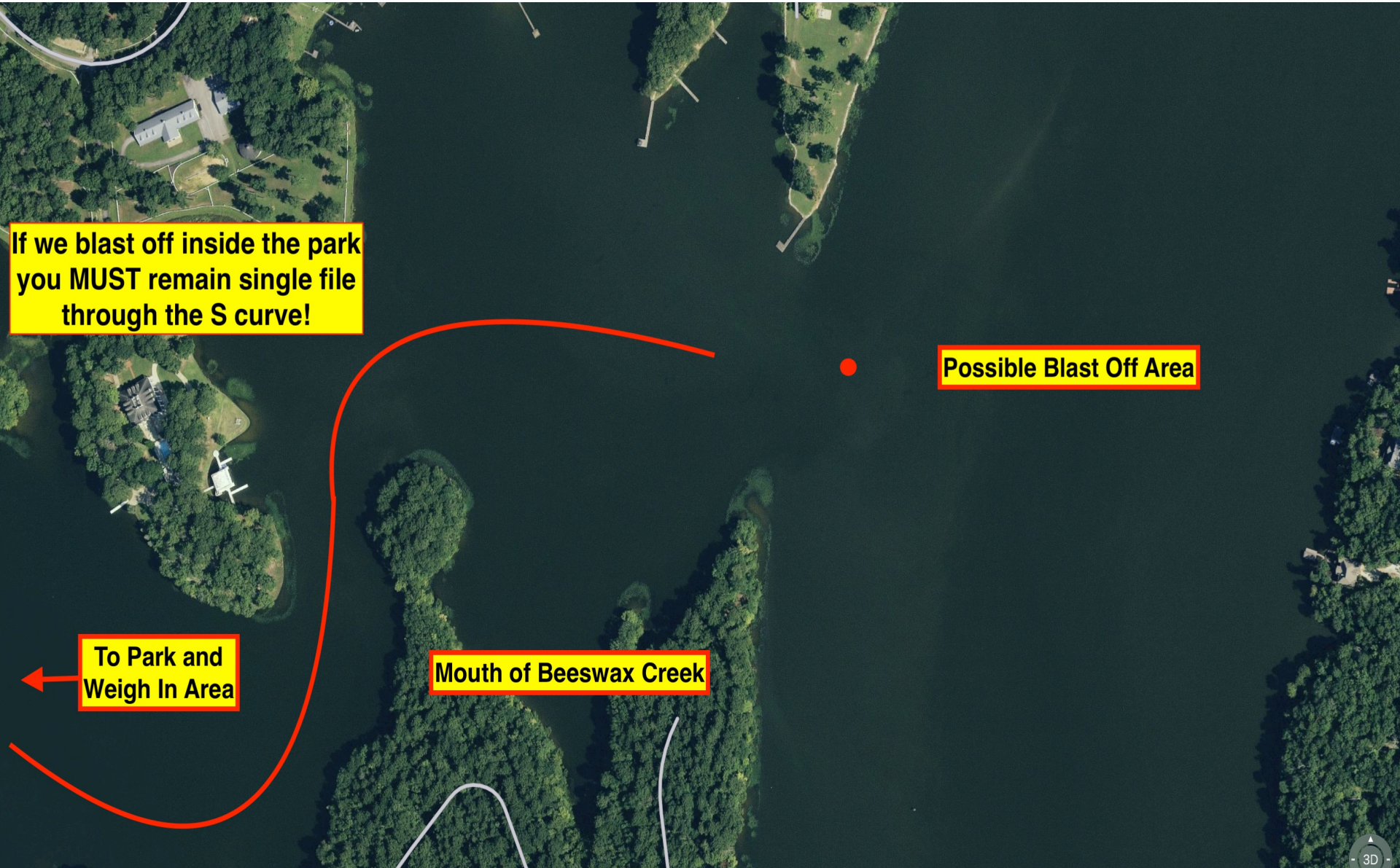
Boat Check

Beeswax Boat Ramp

Additional parking



# LOGISTICS



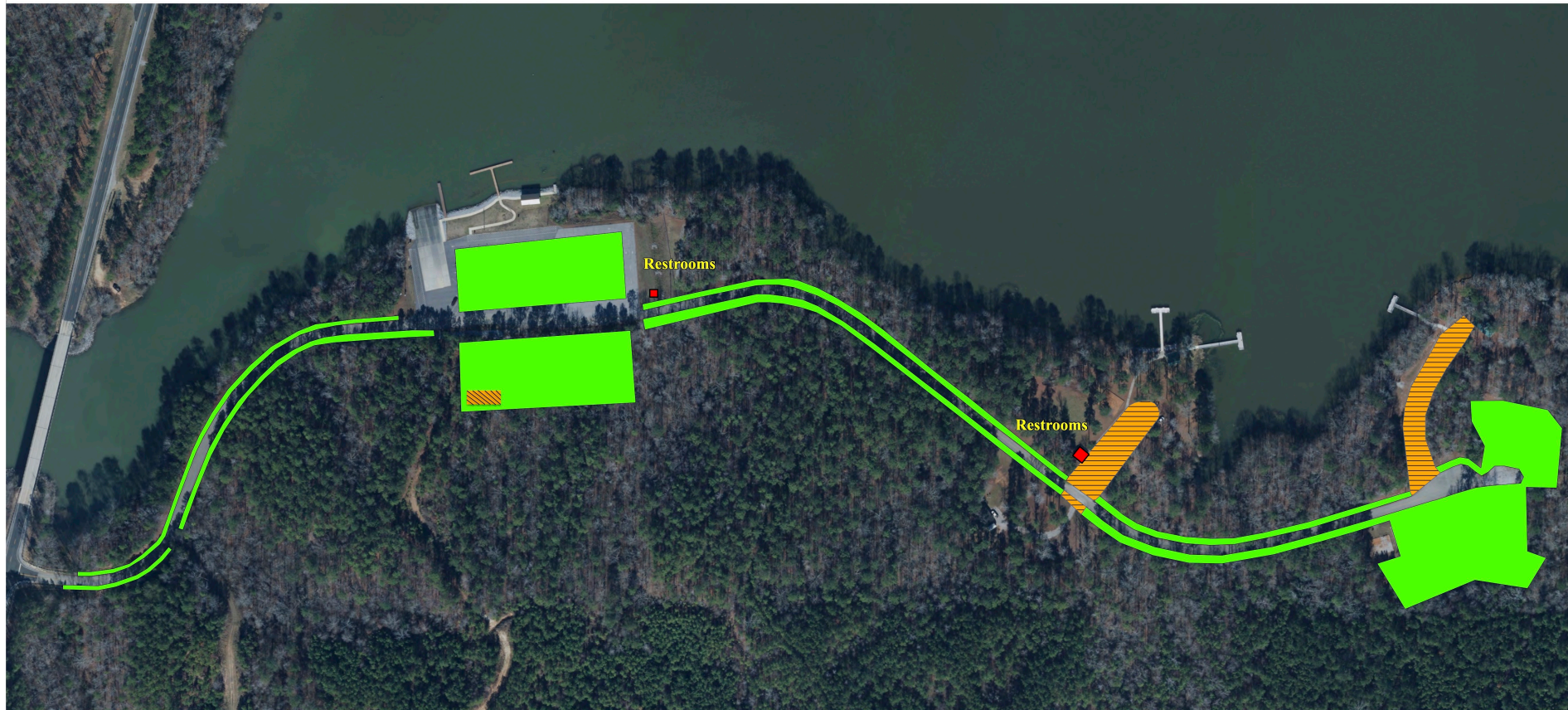
If we blast off inside the park  
you **MUST** remain single file  
through the S curve!

Possible Blast Off Area

To Park and  
Weigh In Area

Mouth of Beeswax Creek

# LOGISTICS



## BEESWAX PARK BOAT TRAILER PARKING AREAS

### Legend

-  Boat Trailer Parking
-  No Boat Trailer Parking



1 Inch = 100 Feet

# Tournament Director Jon Simpson

# 256-309-9852

- In an emergency situation call 911, then only when safe to do so call either myself or Kay Donaldson 256-303-7905
- After weigh-in starts, you will have to contact Kay!

**If you are coming by water  
or using an alternate**

**Contact Jon via text  
message or email  
by Friday at 5 pm.**

**256-309-9852**

# If you are coming by water or using an alternate

Example Texts:

Boat 226 using an alternate  
fishing for Simpson

Or

Boat 226 coming by water

**256-309-9852**

