

# Tournament Series



ALL about THE SOUTH

Sweet Home Alabama™

TM GARMIN™



Tournament Series PRESENTED BY



Chris Brown  
901-493-0437



# RULES OVERVIEW

**RULES**



# WELCOME TO NEELY HENRY

- Boat Check will begin at 2:00am!
- Check in by water at the flashing lights
- Safety First! Anytime your big motor is running you must be wearing a CG rated PFD! Kill Switch tethers are to be worn when big motor is RUNNING AND IN GEAR!
- Please follow all posted water control signs and buoys! (If you're ticketed = DQ)
- Blast off at Safe Daylight - Approximately 5:15am.
- First Flight due in at 2:00pm

# NEELY HENRY

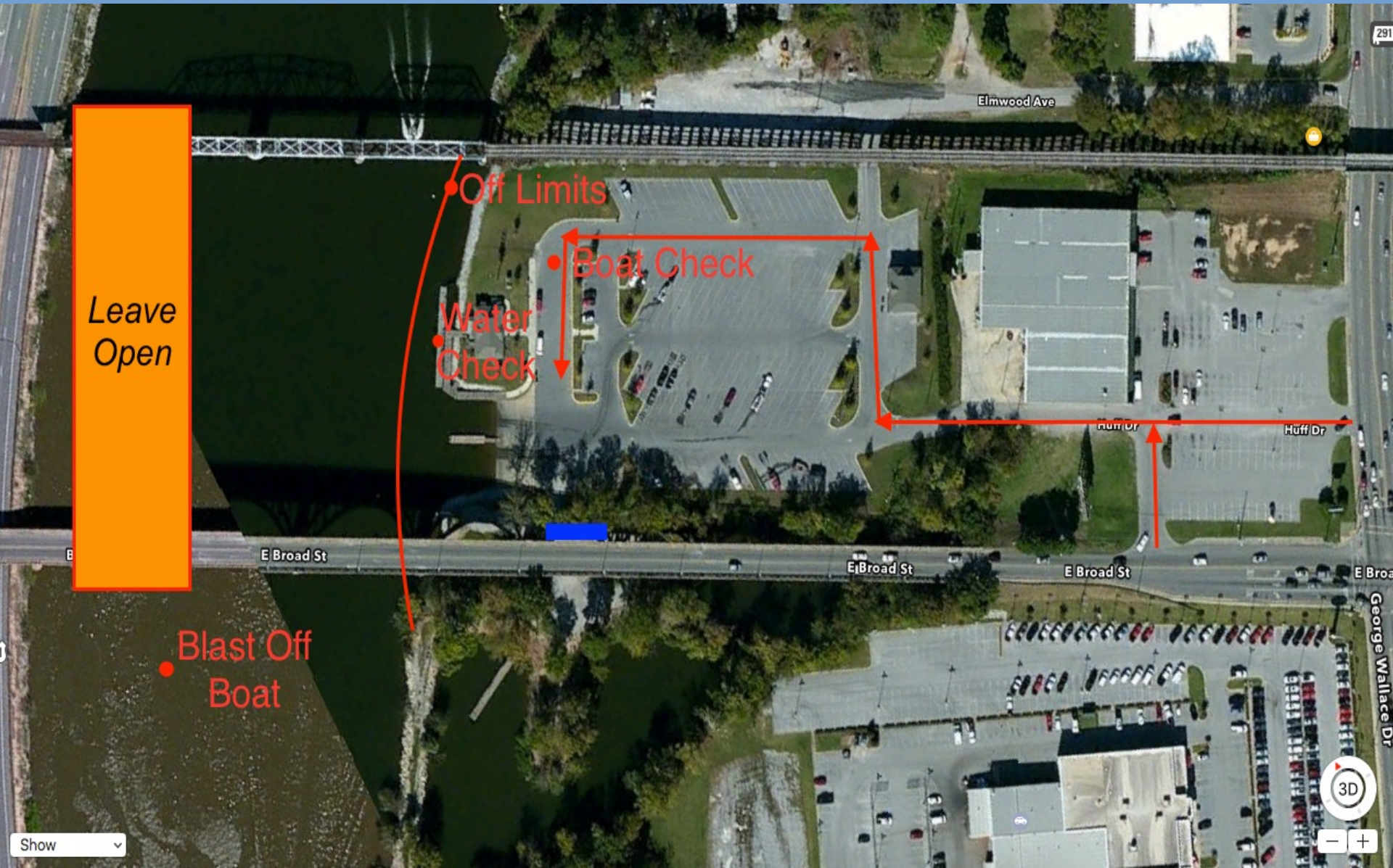
- When you arrive at Boat Check on Saturday morning, the team member in the vehicle's driver seat needs to have the text message with their team's boat number open on their phone.
- The vehicle's driver will be given a key fob at Boat Check. The key fob has the team's boat number.
- DO NOT LOSE YOUR KEY FOB!!! You must return the key fob at weigh-in in order to weigh your team's fish.
- DO NOT PARK IN THE DOLLAR GENERAL PARKING LOT!!!
- This is NOT a trailered weigh-in.

# Fish Size Limit

Largemouth 12-inch

Spotted Bass 12-inch

# Logistics





# Tournament Director Justin Graves

256-309-9852

- In an emergency situation call 911, then only when safe to do so call either myself or Kay Donaldson 256-303-7905
- After weigh-in starts, you will have to call Kay! After 2pm.



**If you are coming by water  
or using an alternate**

**Contact Justin via  
text message or  
email by Friday at 5  
pm.**

**256-309-9852**

# If you are coming by water or using an alternate

Example Texts:

Boat 226 using an alternate  
Donaldson fishing for Graves

Or

Boat 226 coming by water

**256-309-9852**





# Tournament Series



ALL about the SOUTH

Sweet Home  
Alabama™

TM GARMIN™



Tournament  
Series PRESENTED BY

